



STUDENT ACCOMMODATION GUIDE

CONTENTS

Homestay	1
Homestay Fees	2
Share Accommodation Fees	3
Application Process	4
Helpful Hints For Renting	5
Selecting a Suburb and Renting	6
Getting around Perth / Homestay	7
Perth Map	8
Rent a Room, House or Apartment	10
Recommended Perth Hotels	12
Accommodation Providers	13



Homestay is a good way for you to experience the Australian lifestyle, make new friends, practice your English and study at Stanley College. Your host family will welcome you and introduce you to the Australian culture and you will learn all about their family and values. Host families look after students and engage with them in social activities.

We highly recommend you to stay in a Homestay for a minimum of 4 weeks while you adapt to the Australian lifestyle and culture. When you are at Stanley College, you can seek assistance and advise from our Student Support Team to find a room, an apartment or a house to rent.

Unlike other accommodation options, homestay will give you the chance to fully immerse yourself in another culture and language. Your host family will become like your second family and you will be introduced to family and friends. You will also be involved in their day to day activities and this is useful to make new friends both in and outside of school.



If you are under 18 years of age, you must sign up for the Airport Service / Accommodation Placement Services provided by AHN WA.

Arriving in a new country can be very overwhelming. Stanley College recommends that you take advantage of our Airport Reception and Accommodation Placement Service. This will help you feel safe and welcome from the moment you arrive.

Stanley College will assist students with homestay placements. Homestay hosts may be families, couples, single parents with children or single individuals. Your homestay host will provide you with a safe environment and an introduction to living and studying in Australia. You will gain a deeper insight into Australian culture, as well as the opportunity to improve your language skills.

While living with a local host family or individual, you will be provided with a clean, furnished bedroom with a bed, desk, wardrobe, chair and a study lamp. You will also have access to bathroom and laundry facilities as well as an option for meal services. The minimum homestay duration is generally 2 weeks.



HOMESTAY

Stanley College provides international students the opportunity to stay with a specially trained homestay host. A local family or individual will provide you with a safe and happy introduction to living and studying in Perth. Homestay hosts provide a clean, furnished bedroom with a bed, desk, wardrobe, chair and a study lamp for you.

2019 homestay fees are as follows:

HOMESTAY OPTIONS			
Placement Fee	\$290	Airport Pickup from the Airport	\$130
PRIVATE ROOM		SHARED ROOM	
Over 18s Homestay Packages			
Complete Homestay 3 meals, 7 days per week	\$325 / week	Complete Homestay 3 meals, 7 days per week	\$295 / week
Traditional Homestay 2 meals Monday to Friday, 3 meals on weekends	\$290 / week	Traditional Homestay 2 meals Monday to Friday, 3 meals on weekends	\$260 / week
Dinner Only	\$265 / week	Dinner Only	\$235 / week
No Meals	\$210 / week	No Meals	\$180 / week
Under 18s Homestay Packages			
Complete Homestay 3 meals, 7 days per week	\$325 / week	Complete Homestay 3 meals, 7 days per week	\$295 / week

Minimum stay: 4 weeks
Notes for 2019 prices for your consideration:
Internet is included in ALL Homestay packages from January 1, 2019. You will no longer need to pay this money directly to hosts.
Students with special dietary requirements (i.e. Kosher, Halal, Gluten Free, Vegetarian or Vegan meals etc.) may be charged a fee to cover the additional costs to hosts, contact your local office for further details. Prices are subject to change



If you are under 18 years of age, you must sign up for the Airport Service / Accommodation Placement Services provided by AHN WA.



SHARE ACCOMMODATION

Stanley College provides international students with appropriate accommodation options. We will ensure that international students have a safe, enjoyable and worthwhile learning experience while living at your share accommodation. You will be provided with a fully furnished bedroom with the use of household utilities.

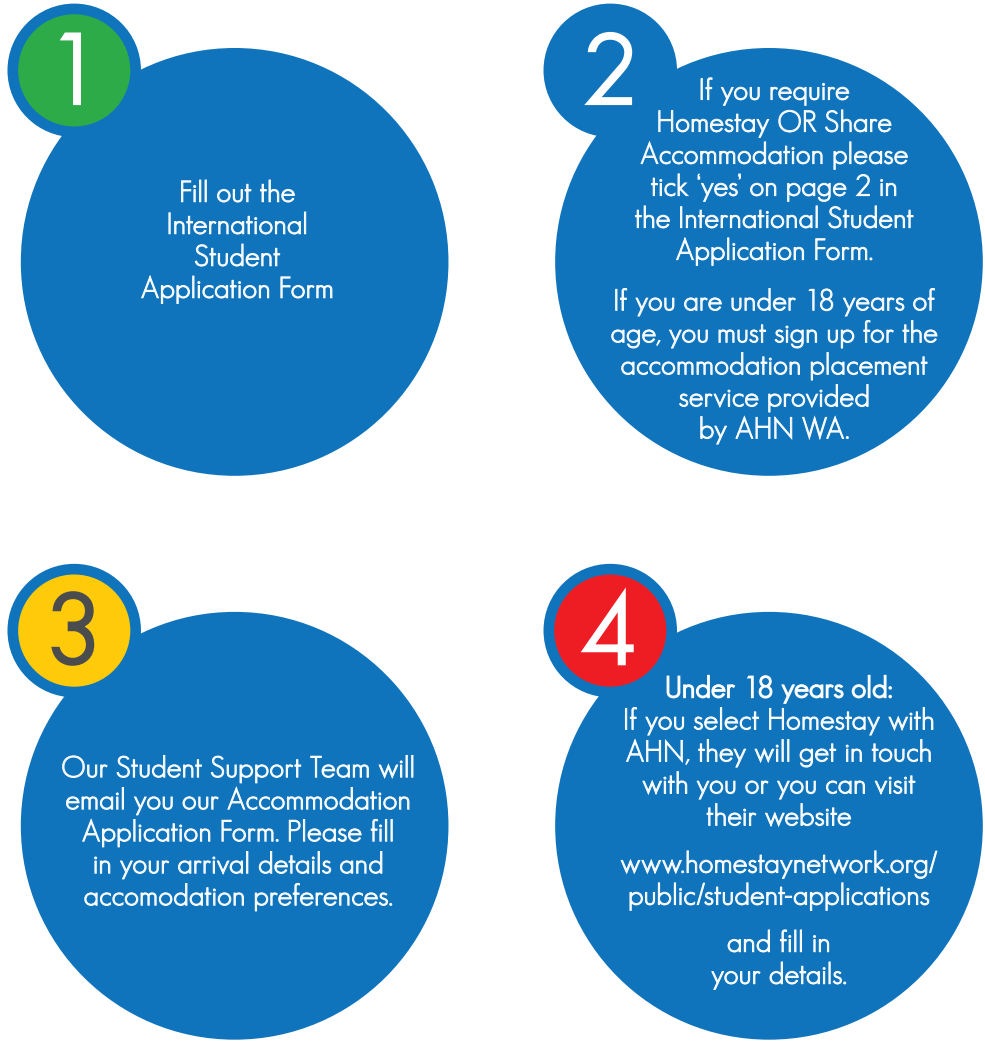
2019 Share Accommodation fees are as follows:

SHARE ACCOMMODATION OPTIONS	FEES 2019
Booking Fee	\$290
Check-out Cleaning Fee*	\$50
Airport reception fee	\$130
ROOM OPTIONS	
Single Room	\$220 / week
Twin Room	\$160 / week
Triple Room	\$140 / week

Minimum stay: 2 weeks
Please note that: • Check-out cleaning fee only covers the administration fee on check-out. This fee will be charged every time a guest requests a room or accommodation change and it does not cover guests' daily cleaning schedule. The students must clean their rooms during their stay.

HOMESTAY / SHARE ACCOMMODATION APPLICATION PROCESS

Stanley College provides international students with appropriate accommodation options. We will ensure that international students have a safe, enjoyable and worthwhile learning experience while living with a homestay family or at a share accommodation. You will be provided with a fully furnished bedroom with the use of household utilities.



We highly recommend you to stay in a Homestay for a minimum of 2 weeks while you adapt to the Australian lifestyle and culture. When you are at Stanley College, you can seek assistance and advise from our Student Support Team to find a room, an apartment or a house to rent.

HELPFUL HINTS FOR RENTING

HELPFUL HINTS FOR RENTING WHEN SELECTING AN ACCOMMODATION OPTION

ACCOMMODATION	WEEKLY RATES
Hostels and Guesthouses	\$90 to \$150
Shared Rental	\$85 to \$215
On campus	\$90 to \$280
Homestay	\$235 to \$325
Rental	\$165 to \$440

NOTE: All prices are for your reference only.
Ref. <https://www.studyinaustralia.gov.au/english/live-in-australia/living-costs>

- 1** Always view properties in person especially if it is a private rental without a rental agency. If the landlord claims you cannot view the property because they are currently overseas or refuses to meet in person, they are unlikely to be legitimate.
- 2** Always take someone with you to rental inspections if there is no agent. It is always good to have a second opinion from a friend or someone who has been living in Australia.
- 3** Never send money to anyone you do not know. This includes mailing cheques or using payment services like BPAY, Western Union or Money Gram to pay. Only pay money once you have signed a rental agreement, even if it is a private rental.
- 4** If it looks too good to be true it probably is! If you are unsure about a property or a person, you can always ask a friendly Stanley College staff to help.
- 5** Useful webpages
To compare accommodation prices go to:
- A** GUMTREE www.gumtree.com.au
 - B** REAL ESTATE www.realestate.com.au/rent
 - C** DOMAIN www.domain.com.au
 - D** FLATMATES www.flatmates.com.au

SELECTING A SUBURB AND RENTING

POINTS TO CONSIDER WHEN SELECTING A SUBURB TO LIVE IN

AFFORDABILITY

You must ensure that the suburb that you choose to live in is affordable for you while you are studying, especially if you do not plan to work while you study or do not have a job yet.

As a general rule, suburbs that are closer to the city tend to be more expensive. Do your research or ask a friend who already lives in Australia, or ask any Stanley College staff for advice.

DIFFERENT TYPE OF ACCOMMODATION

Suburbs closer to the city will have lots of high rise apartments and town houses. Suburbs further from City will have more houses on land and duplex houses.

You need to consider whether you want to share a room and/or bathroom with other students or people. If you are planning to bring your family, you should consider how many rooms you will need or whether you will like to live alone.

SEEK INFORMATION

You may choose to stay in a homestay or backpacker hostel for the first two weeks while you familiarise yourself to the city and decide what is the best accommodation option for you.

SAFETY

Perth is well known for its safety. Use good judgement and do not be on your own late at night. Perth is a safe city but you should always practice good judgement. Do not walk alone in dark quiet areas. CCTV cameras are installed in the central city, Northbridge and all train stations. For your safety, they are monitored 24 hours a day.

SUBURBS

You are probably interested in suburbs that are near to Stanley College. Below are suburbs that are within **10km radius** from Perth City and Mirrabooka:

PERTH CITY

- Northbridge
- North Perth
- Mount Lawley
- West leederville
- Wembley
- Rivervale

MIRRABOOKA

- Ballajura
- Balcatta
- Mirrabooka
- Nollamara
- Dianella
- Morley

GETTING AROUND PERTH

PUBLIC TRANSPORT

Perth has a good and clean public transport system of buses, ferries and trains. As a student of Stanley College, you will receive at least 40% discount on all public transport services throughout Perth. In Perth City all bus services are free of charge. This allows you to get around the city and adjacent areas at no cost at all.

PRIVATE VEHICLES

If you are staying in Perth for a long length of time, you may decide to purchase a car. You will be responsible for the cars registration, fuel, insurance, maintenance and service costs. Therefore you need to do your research and ensure that this is an affordable option for you before you make the purchase.

BIKE

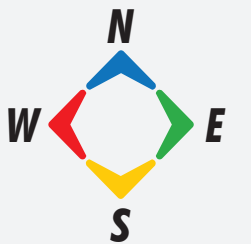
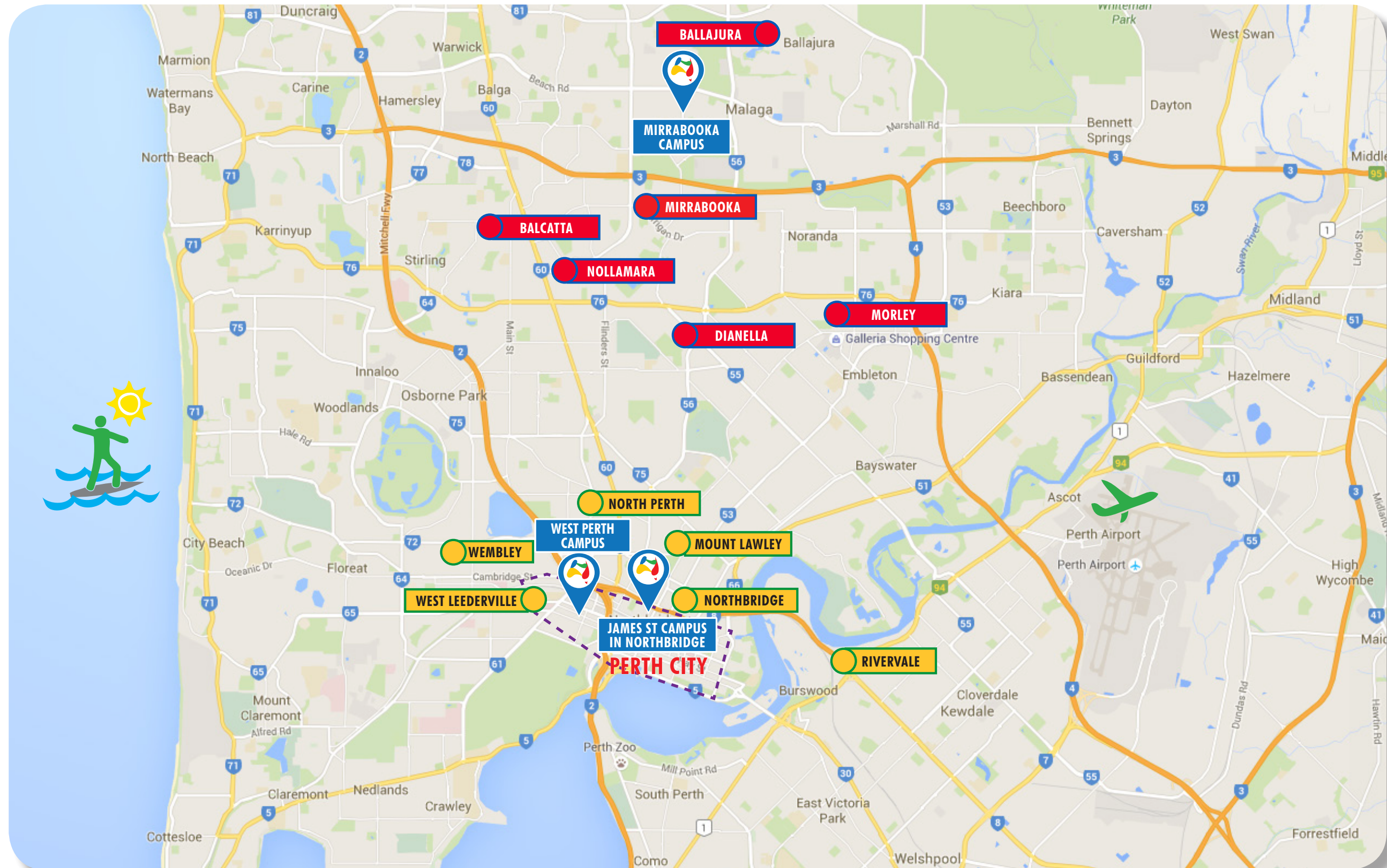
Riding a bike is an affordable and easy way to get around Perth and keep fit at the same time! There are many on road and off road cycle paths in Perth.

PERTH

Perth is the capital of Western Australia, famous for being the most isolated city in the world. It offers a wide range of outdoor activities for students based on sun, sport, beaches, parks and BBQs. Some of these activities are surfing, windsurfing, kayaking, fishing and kitesurfing. Margaret River is one the best 'big wave' locations in the planet and is located within 2 hours and 53 minutes driving from the city centre. There are many cycling tracks and flat terrain to immerse into WA's biodiverse landscape as well as bushwalking and hiking along Kings Park.

There are many free activities to do in Perth. You can do snorkelling, diving and kayaking near Rockingham in the Snokerl Shoalwater Marine Park. The reefs surrounding Penguin Island provide good view of marine life including sea stars, urchins, molluscs and colourful fishes. You can also go off road in Lancelin endless mountainous sand dunes, go for a four-wheel driving, quad-biking or buggy racing. On the other hand, Kings Park, botanic garden has extensive city and river views and there are picnic and barbecue facilities for people.

PERTH MAP



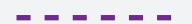
LEGEND



Stanley College campuses located in Northbridge, and Mirrabooka.



Recommended suburbs to live in which are near our campuses. Please refer to pages 10 & 11 for the approximate rental prices



Free CAT: Free Transperth bus services in the central areas of Perth, Fremantle and Joondalup

RENT A ROOM, HOUSE OR APARTMENT NEAR CAMPUS

PERTH CITY CAMPUSES
(Northbridge and West Perth)

MOUNT LAWLEY

🚲 Distance from City: 3.1km 🚗 Driving time to City: 11 minutes
🚆 4 stations from City (Midland Train Line)

	Single	Couple	
Share House (1 bedroom)	\$150	\$200	
	1 Bedroom	2 Bedrooms	3 Bedrooms
Apartment	\$250	\$350	\$500
House	\$290	\$450	\$550

NORTH PERTH

🚲 Distance from City: 3.9km 🚗 Driving time to City: 8 minutes

	Single	Couple	
Share House (1 bedroom)	\$160	\$200	
	1 Bedroom	2 Bedrooms	3 Bedrooms
Apartment	\$250	\$400	\$450
House	\$300	\$455	\$500

NORTHBRIDGE

🚲 Distance from City: 700m 🚶 5 minutes walk to City Centre
Free Bus

	Single		Couple	
Share House (1 bedroom)	\$150		\$200	
	1 Bedroom	2 Bedrooms	3 Bedrooms	
Apartment	\$320	\$480	\$600	
House	\$375	\$550	\$750	

RIVERVALE

🚲 Distance from City: 7.0km 🚗 Driving time to City: 13 minutes

	Single		Couple		Single		Couple
Share House (1 bedroom)	\$150		\$200	Share House (1 bedroom)	\$150		\$210
	1 Bedroom	2 Bedrooms	3 Bedrooms		1 Bedroom	2 Bedrooms	3 Bedrooms
Apartment	\$250	\$350	\$500	Apartment	\$320	\$300	\$470
House	\$290	\$450	\$550	House	—	\$340	\$360

WEMBLEY

🚲 Distance from City: 4.5km 🚗 Driving time to City: 11 minutes

	Single		Couple		Single		Couple
Share House (1 bedroom)	\$160		\$200	Share House (1 bedroom)	\$140		\$200
	1 Bedroom	2 Bedrooms	3 Bedrooms		1 Bedroom	2 Bedrooms	3 Bedrooms
Apartment	\$250	\$400	\$450	Apartment	\$230	\$300	\$400
House	\$300	\$455	\$500	House	—	\$360	\$430

WEST LEEDERVILLE

🚲 Distance from City: 5.3km 🚗 Driving time to City: 9 minutes
🚆 2 stations from City (Fremantle Train Line)

	Single		Couple		Single		Couple
Share House (1 bedroom)	\$150		\$200	Share House (1 bedroom)	\$170		\$210
	1 Bedroom	2 Bedrooms	3 Bedrooms		1 Bedroom	2 Bedrooms	3 Bedrooms
Apartment	\$320	\$480	\$600	Apartment	\$250	\$400	\$550
House	\$375	\$550	\$750	House	—	\$550	\$600

BALCATT

🚲 Distance from Campus: 3.5km 🚗 Driving time to Campus: 8 mins
🚲 Distance from City: 11.4km 🚗 Driving time to City: 15 minutes

	Single	Couple	
Share House (1 bedroom)	\$140	\$200	
	1 Bedroom	2 Bedrooms	3 Bedrooms
Apartment	—	\$300	\$350
House	\$230	\$350	\$400

BALLAJURA

🚲 Distance from Campus: 8.3km 🚗 Driving time to Campus: 13 mins
🚲 Distance from City: 18.3km 🚗 Driving time to City: 30 minutes

	Single	Couple	
Share House (1 bedroom)	\$150	\$200	
	1 Bedroom	2 Bedrooms	3 Bedrooms
Apartment	\$285	\$300	\$350
House	—	\$350	\$390

DIANELLA

🚲 Distance from Campus: 4.5km 🚗 Driving time to Campus: 8 mins
🚲 Distance from City: 9.1km 🚗 Driving time to City: 20 minutes

	Single	Couple	
Share House (1 bedroom)	\$130	\$210	
	1 Bedroom	2 Bedrooms	3 Bedrooms
Apartment	\$230	\$290	\$340
House	—	\$330	\$380

RENT A ROOM, HOUSE OR APARTMENT NEAR CAMPUS

MIRRABOOKA CAMPUS

MORLEY

🚲 Distance from Campus: 6.5km 🚗 Driving time to Campus: 13 mins
🚲 Distance from City: 8.7km 🚗 Driving time to City: 21 minutes

	Single	Couple	
Share House (1 bedroom)	\$130	\$180	
	1 Bedroom	2 Bedrooms	3 Bedrooms
Apartment	—	\$280	—
House	\$250	\$330	\$340

MIRRABOOKA

🚲 Distance from Campus: 2.0km 🚗 Driving time to Campus: 5 mins
🚲 Distance from City: 14.3km 🚗 Driving time to City: 23 minutes

	Single	Couple	
Share House (1 bedroom)	\$120	\$200	
	1 Bedroom	2 Bedrooms	3 Bedrooms
Apartment	—	\$300	\$330
House	—	\$330	\$350

NOLLAMARA

🚲 Distance from Campus: 2.5km 🚗 Driving time to Campus: 5 mins
🚲 Distance from City: 10.6km 🚗 Driving time to City: 20 minutes

	Single	Couple	
Share House (1 bedroom)	\$130	\$200	
	1 Bedroom	2 Bedrooms	3 Bedrooms
Apartment	\$240	\$300	\$350
House	—	\$320	\$380

NOTE: All prices are for your reference only. Electricity bills and Internet excluded.
Ref. www.realestate.com.au/

Other suburbs to check out:
Como, Carlise, Maylands,
Victoria Park & East Victoria Park!

NOTE: All prices are for your reference only. Electricity bills and Internet excluded.
Ref. www.realestate.com.au/

Other suburbs to check out:
Balg, Tuart Hill, Yokine, Noranda,
Joondana & Westminister!

RECOMMENDED PERTH HOTELS

Please contact the
accommodations
directly

ACCOMODATION PROVIDERS 2019

Please contact the
accommodations
directly



THE RENDEZVOUS HOTEL PERTH SCARBOROUGH*

148 THE ESPLANADE,
SCARBOROUGH WA 6019

+61 8 9245 1000

A 3-minute walk from Scarborough Beach, this modern, high-rise hotel is also 7 km from Bold Park and 10 km from the recreation area at Hillarys Boat Harbor.

Sleek rooms come with free Wi-Fi and flat-screen TVs, plus room service, minibars, and tea and coffeemaking facilities. Club rooms and suites offer balconies and access to a lounge with breakfast and evening snacks.

There's an elegant restaurant with panoramic ocean views, a lobby bar and an outdoor pool with a bar. Other amenities include an observation deck, 2 contemporary ballrooms and a business centre.



10 IRWIN ST,
PERTH WA 6000

+61 8 9326 7000

This modern hotel in Perth Central Business District is within a 13-minute walk of the Foreshore River Reserve, the ferry terminals and Perth train station.

Featuring Wi-Fi and flat-screen TVs, the bright, functional rooms and suites also offer minibars, and tea and coffeemaking facilities. Suites add living rooms, dining rooms and sofabeds. Room service is available.

Amenities include an elegant restaurant/bar, a casual cafe/bar and a rooftop pool, plus a Jacuzzi, a sauna and a fitness room. Parking is available.



PAGODA RESORT & SPA*

112 MELVILLE PARADE,
COMO WA 6152

+61 8 9367 0300

Overlooking the Swan River in the suburb of Como, this upscale, Asian-inspired resort is flanked by a pagoda dating to 1926. It's 1.2 km from the Royal Perth Golf Club.

Modern rooms and suites come with Wi-Fi (fee) and flat-screen TVs, plus minibars, and tea and coffeemaking facilities; most have balconies and/or whirlpool baths in their bathrooms. There are also 1- and 2-bedroom apartments with kitchens and washer/dryers. Room service is available 24/7.

Within the pagoda, a modern, Chinese-inspired restaurant and bar features a grand piano, and serves modern Australian fare. There's an outdoor pool, a gym and a sauna, plus 6 meeting rooms.

THE BOULEVARD PROPERTY

89 STIRLING STREET,
NORTHBRIDGE, PERTH WA 6000

+61 8 6168 2454

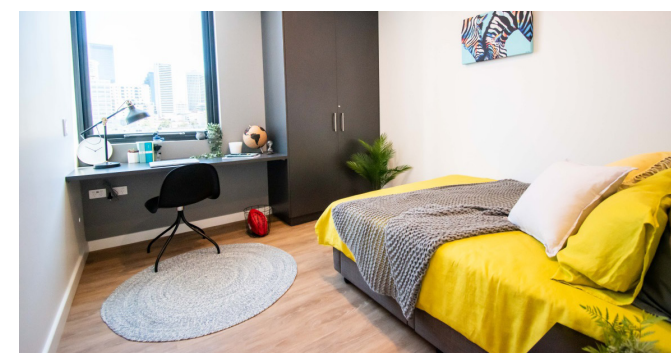
The Boulevard is luxurious student accommodation that is in the heart of Perth, within walking distance to Stanley College. Live in the heart of the social and cultural district with Perth's CBD just a stone throw away. Choose from several room options such as 5 bedroom with or without en-suite bathroom, 6 bedroom apartments, twin studio and studio.

All rooms at The Boulevard come fully furnished. You will have a comfortable bed, ample storage space, a study desk and a fully fitted kitchen. You can choose to live with other students in a shared apartment or live by yourself in a studio. All apartments have air-conditioning so that you are comfortable during the summer months.

The property has great communal spaces as well to help you make the most of your time when you are not busy studying. The residence team also puts together regular social events for students like exercise classes, games, quiz, movie nights and summer parties - so your time studying is the best it possibly can be.

Our rooms and prices:

- ✓ Studio Plus Apartment from \$406 including all utilities
- ✓ Studio Apartment from \$399 including all utilities
- ✓ DDA Studio Apartment from \$399 including all utilities
- ✓ 5 Bedroom En-suite Apartment from \$329 including all utilities
- ✓ 5 Bedroom Apartment from \$299 including all utilities
- ✓ 6 Bedroom Apartment from \$289 including all utilities
- ✓ Twin Studio Apartment from \$239 including all utilities



CAMPUS PERTH

80 STIRLING STREET,
PERTH, WA 6000, AUSTRALIA

+61 403 494 371

Campus Perth is an inner city, affordable and all-inclusive co-living option, with a variety of contract lengths and room types to suit all budgets from private Studio apartments, Twodios for twin share, Cluster 6 bedroom apartment or a Campus 4 dorm. Every room at Campus Perth comes equipped with the same set of features such as free Wi-Fi, lockable drawers, bathrooms, individual study desks, card access doors, CCTV and USB charging hubs.

When it comes to community living, Campus Perth has been specifically designed to achieve the perfect balance of study, social life and wellness. Split across 3,600sqm, student exclusive communal areas include a fully-equipped fitness club, rooftop BBQ terrace, "The Link" a co-working space with individual workstations and meeting rooms, and The Commons, a mix of areas to relax and take a break from studying - all in a vibrant, multi-cultural environment with gaming, screening and a juice bar.

Rates are a bit tricky since we have a big range, perhaps it's best to have it listed as the below:

- ✓ Campus 4 starting from \$162 per week
- ✓ Twodio starting from \$235 per week
- ✓ Cluster 6 starting from \$250 per week
- ✓ Studio starting from \$335 per week

* These hotels are Stanley College's Work-Base-Training partners.

HEAD OFFICE

Stanley International College Pty Ltd
Trading as Stanley College
CRICOS PROVIDER CODE: 03047E
RTO Code: 51973
ABN: 16 130 977 221

ADDRESS: 171 James Street, Perth Western Australia 6003
PHONE: +61 8 9227 1797
FAX: +61 8 9227 1238
EMAIL: info@stanleycollege.edu.au
WEBSITE: www.stanleycollege.edu.au

PHILIPPINES

ADDRESS: Unit 401 Executive Building Center,
369 Sen Gil Puyat Ave., Brgy. Bel-Air Makati City, Philippines 1209
MOBILE: +63 908 874 9197
EMAIL: philippines@stanleycollege.edu.au

For more information, visit www.stanleycollege.edu.au



Find us on Facebook
www.facebook.com/St StanleyInternationalCollege



Follow us on Instagram
www.instagram.com/stanley_college



Follow us on WeChat
WeChat Name: StudyinPerth



Follow us on Twitter
www.twitter.com/St Stanley_College



Call us on Skype
Perth, Western Australia, Skype: stanley.college

Philippines Skype: stanley.college.philippines
Latin America Skype: stanley.college.brasil

Every effort has been made to ensure that the information contained in this publication is correct as of 22 January 2019.
This information is subject to amendment without notice. Please visit www.stanleycollege.edu.au for the latest updates.